

Switchgear type BPP2/1U/1 for rated voltage 500V



Through connection block type BPP2/1U/1 is a device designed for use in underground mining pits in non-explosive coal dust conditions and on the ground.

Through connection block type BPP2/1U/1 is designed for connecting and distributing power in mine distribution three-phase grid with isolated star point transformer (IT system) for rated grid voltage of 500V, and especially for manual switching to backup power source.

TECHNICAL DATA:

ingress protection	IP54
rated power supply voltage	500V, 50 Hz
number of 500V outlets	2
rated current of the outlets	160A
dimensions	1400 x 550 x 350mm (H x W x D)
weight	60 kg

CONSTRUCTION

The through connection block is composed of a housing mounted on a frame construction, equipped with brackets. The frame construction allows the device to be hung on the pit wall.

MODE OF OPERATION

In 3x500V main circuit the switchgear is equipped with a three-position switch 1Q (first position: first supply connected; second position: supplies switching off; third position: second supply connected) and with a three-position switch 2Q (first position: outlets are switching-on; second position: outlets are switching-off; third position: outlets are earthing). Opening the switchgear's door is only possible when both switches (1Q and 2Q) are in their off position. Every position of the switch can be locked by putting a lock on the switches drive lever.

The 1H1-1H3 indicating lamps inform us about the presence of 500V of voltage on the first supply's grid, the 2H1-2H3 indicating lamps inform us about the presence of 500V of voltage on the second supply's grid.

Digital analyser A is used to observe the parameters of the current, voltage and power of the main circuit 500V. Data from the analyser A is transmitted to the external system via modem M.

SCHEMATIC DIAGRAM

Legend:

Zasilanie 1,2 – Supply 1,2

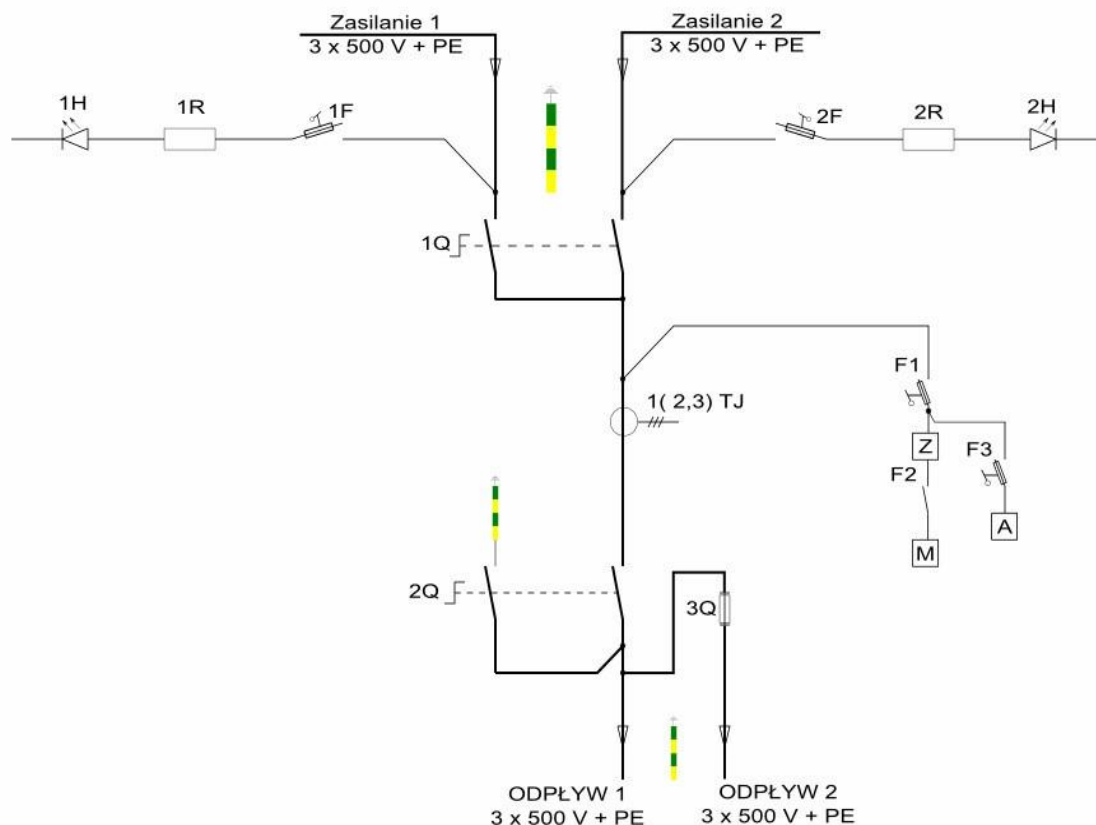
Odpyw 1,2 – Outlet 1,2

1Q,2Q – switch disconnector

M – modem

A – analyser

1(2,3) TJ – current transformer



Orders should be submitted in writing or by fax to the address:

 **Instal-Service PL**

Spółka z ograniczoną odpowiedzialnością
Spółka komandytowa
58-506 Jelenia Góra, ul. Wrocławska 15a
tel. (+48 075) 64-57-950
fax. (+48 075) 64-57-951
e-mai: instal@instal-service.pl